

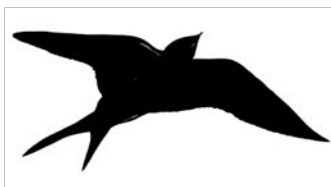
W
E
L
C
O
M
E

S
W
A
L
L
O
W

G
A
L
L
E
R
Y



Exhibition Catalogue



Joy of Humanity: People & Place

22nd January – 26th March 2021

378 Grey St. Hamilton East, www.wsgalleryandgifts.com

Joy of Humanity: People & Place

This exhibition at the *Welcome Swallow Gallery* takes place at the beginning of a New Year that hopefully heralds more joyful times ahead. As we celebrate art, this exhibition entitled the *Joy of Humanity: People & Place* is intended to express a post-covid optimism and celebration of life's possibilities alongside nature's bounty.

New artist to the gallery, **Juliet Roper** is not afraid to use a strong vibrant colour palette to drive an impressionist style that lands her portraiture somewhere between Andy Warhol and Françoise Nielly. Her landscape compositions veer more towards Camille Pissaro, evocative of his 1897 *Boulevard Montmartre at Night*, painting. Roper gives strength and purpose to her subject matter, deriving confidence from her chosen settings and compositional narratives.

Bernadette Parsons, needs no introduction to gallery goers who have admired her dramatic vistas as seen in the *Waikato Watercolourist* exhibition of a year ago and also subsequently in our Permanent Collection. Here she features her signature landscapes together with subjects who find themselves anticipating, absorbing, interacting and living in the joy of the moments that nature provides. Parsons is not suggesting that nature is reclaimed, more that we can reclaim ourselves within what nature provides.

Closely following British watercolourist Ron Ranson, **Martin Necas** is a watercolourist artist who presents landscapes using a colour palette 'imagined' that causes the viewer to contemplate familiar compositional content in a new light. The sense of the surreal and the sublime captures the eye, inviting the viewer to rethink what they see.

What emerges from Martin's paintings is a mystical magical 'otherworld' that stretches a formal interpretation of place and the humanity that resides within it.

Rebecca Dowman-Ngapo presents four breathtakingly detailed watercolour compositions that rival her stupendous painting of the June, Lady Hillary portrait, initially shown at the *Welcome Swallow Gallery*, now permanently residing in the Hillary Collection at the *Auckland Museum*. Dowman-Ngapo colourfully captures spirit and emotion that provides both literal and figurative scintillating illustrations of the joy of humanity. Her composition, *I can Fling a Rainbow* perfectly paces this exhibition.

As you browse through this catalogue, we encourage you to enjoy these art pieces in the comfort of your own surroundings. Both the artists and the cause are well worth your investment.

ACCCT Board, January 2021



1.



Juliet Roper

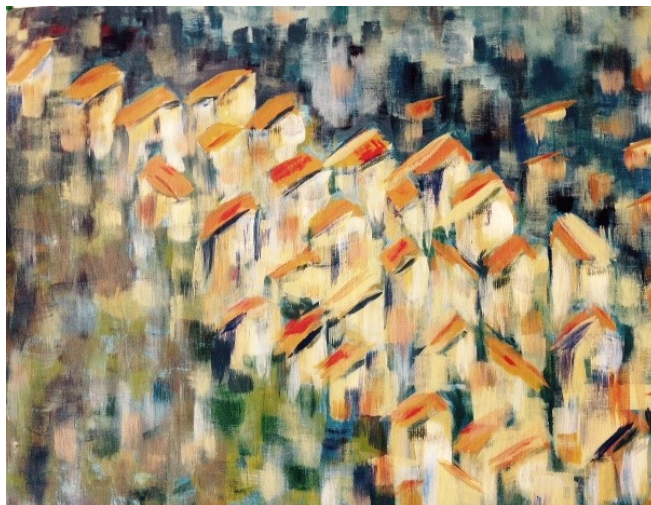
Italia

Acrylic on canvas

1520x760mm

Price: \$920

2.



Juliet Roper

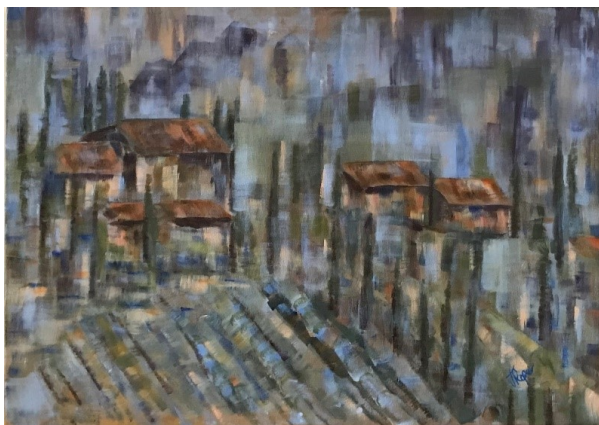
Community

Acrylic on canvas

600x700mm

Price: \$850

3.



Juliet Roper

Country Blues

Acrylic on canvas

500x700mm

Price: \$650

4.



Juliet Roper

Reflections

Oil, cold wax on canvas

700x500mm

Price: \$650

5.



Juliet Roper

Bicycle

Oil, cold wax on cradled board

590x400mm

Price: \$650

6.



Juliet Roper

Hygge

Acrylic on canvas

760x1015mm

Price: \$850

7.



Juliet Roper

Window on the World

Acrylic on canvas

760x1015mm

Price: \$850

8.



Juliet Roper

Poolside

Acrylic on cradled board

670x610mm

Price: \$850

9.



Juliet Roper

Keeping Cool

Acrylic on cradled board

605x700mm

Price: \$850

10.



Juliet Roper

Winter Catch-up

Oil, cold wax on cradled board

600x600mm

Price: \$690

11.

**Bernadette
Parsons**
The
Koi Carp Catch
Watercolour
500x700mm
Price: \$1100



12.



Bernadette Parsons

Rangitikei

Watercolour

900x700mm

Price: \$2800

13.



Bernadette Parsons

Matukituki Tops

Watercolour

700x500mm

Price: \$1800

14.



Bernadette Parsons

Rangitikei

900x700mm

Watercolour

Price: \$2800

15.



Bernadette Parsons

Arthur's Pass

Watercolour

700x500mm

Price: \$1500

16.



Bernadette Parsons

Haast Beech Study

Watercolour

900x700mm

Price: \$2800

17.



Bernadette Parsons

Pathfinders

Watercolour

500x600mm

Price: \$1100

18.



Bernadette Parsons

Miranda Bird Sanctuary

Watercolour

500x700mm

Price: \$1500

19.



Martin Necas

Moonlight

Watercolour

450x625mm

Price: \$275

20.



Martin Necas

Lake Ngaroto Wetland

Watercolour

635x830mm

Price: \$1000

21.



Martin Necas

Waikato River at Jones Landing

Watercolour

635x830mm

Price: \$1000

22.



Martin Necas

Sky Lines

Watercolour

530x730mm

Price: \$450

23.



Martin Necas

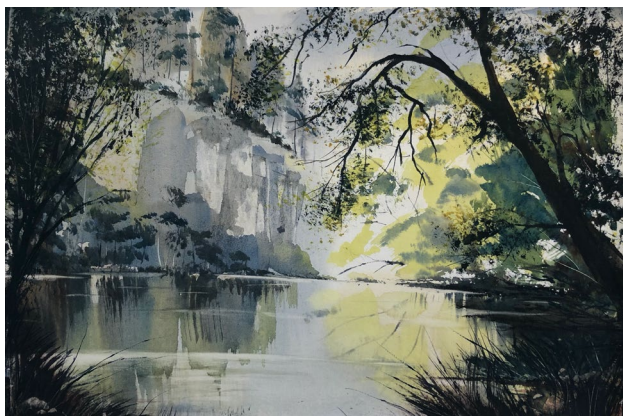
The Mighty River

Watercolour

530x730mm

Price: \$450

24.



Martin Necas

Lake Arapuni

Watercolour

505x660mm

Price:\$325

25.



Martin Necas

Fairfield Bridge

Watercolour

450x625mm

Price: \$450

26.



Martin Necas

Autumn River Bank

Watercolour

525x680mm

Price: \$450.00

27.



Rebecca Dowman-Ngapo

Ranunculus Love

Watercolour

595x420mm

Price: \$2500

28.



Rebecca Dowman-Ngapo

Sunflower Peek

Watercolour

610x610mm

Price: \$1900

29.



Rebecca Dowman-Ngapo
Nature Nurtures Love
Watercolour
610x610mm
Price: \$2000

30.



Rebecca Dowman-Ngapo
I Can Fling a Rainbow
Watercolour
680x1210mm
Price: \$2150



Rebecca Dowman-Ngapo

Rebecca Dowman-Ngapo is a Taranaki born, Waikato based artist specializing in watercolour. This body of work represents the freedoms we are currently fortunate to enjoy in New Zealand while being reflective and grateful for the learnings and appreciation that we gained from our time in lockdown.

In 2020 Rebecca was commissioned to do a portrait of June, Lady Hillary that now resides in the Auckland Museum in the Hillary archive that is World Heritage protected. Rebecca's painting, *Making Magic, Taming Dragons* was a finalist in the 2020 Adam Portraiture Award and currently tours New Zealand. Her artworks also won the People's Choice Award in the Watercolour New Zealand's Gordon Harris



Martin Necas

I am a Hamilton-based artist. My true love is watercolour and that is the only medium I use. I gravitate towards bold, expressive, impressionist landscapes that capture the natural beauty of New Zealand. I invite the viewer to join me on a journey of wonder and discovery.

There is always something new, something previously unseen, something mysterious and something emotive in my paintings. Where will they take you?

online Competition in 2018 and 2019. Rebecca regularly exhibits in New Zealand and has art works homed across the world.



The Exhibition Artists



Bernadette Parsons

Working in a partnership with watercolour instead of challenging it, enables me to attempt to create excitement through strong bold brushstrokes with the joy of hard and soft edges. This time allows the paint to have the freedom to keep painting on the paper. Watercolour has been my passion for over twenty years, encouraged by the humble beauty of the Waikato Whangamarino Wetlands where I live, and my passion for landscapes, especially trees. I have had success in winning awards and selling my work encourages me to just keep going.



Juliet Roper

2021 is the year in which Juliet Roper makes the transition from full time academic to artist.

Her work, which has appeared in group exhibitions at the Wallace Gallery, Morrinsville, and at Arts Post, Hamilton, is influenced by her research and earlier career in media and advertising. Here she uses portraits to explore images of women in society and to celebrate the extraordinary in the everyday of women's lives.



GALLERY EXHIBITION LIST

1. Various Artists, ***Celebration with Celebration- Redux***, 1st May – 1st August 2019
2. Various Artists, **Threads of Life**, 9th August – 20nd September 2019
3. Various Artists, **Raglan Art with Risk**, 27th September – 27th October 2019
4. Various Artists, **Christmas in the Gallery**, 1st November – 10th January 2020
5. Various Artists, **The Waikato Watercolourists**, 14th February – 31st March 2020
6. Various Artists, **A New Zealand Story**, 3rd April – 31st May 2020
7. Various Artists **It's all in the Mind**, 10th July – 30th August 2020
8. Various Artists, **A Welcome Swallow Exhibition**, 18th September – 5th January 2021
9. Various Artists **Joy of Humanity: People and Place** 15th January – 26th March 2021



e-mail welcomeswallow.nz@gmail.com;
Tel: 07-858-3964; 378 Grey St Hamilton East

PLEASE VISIT

YOUTUBE: www.youtube.com/channel/UCrn5EKzvZ7uSmHJP27bciNQ



WEBSITE: www.wsgalleryandgifts.com



FACEBOOK: www.facebook.com/thewelcomeswallow/



INSTAGRAM: www.instagram.com/wsgalleryandgifts/