



The Welcome Swallow Gallery ~ Out of Italy ~

Sandra Turner-Barlow

&

Elena Brambilla



Catalogue
14th March – 9th May 2025



Friends of Welcome Swallow

MONTANA
FOOD AND EVENTS

Exhibition Sponsors

~ Out of Italy ~

This is an ambitious exhibition. For the Welcome Swallow Gallery, *Out of Italy* represents our 36th exhibition of original art. The gallery narrative is to curate bold, innovative topics that enable artists to continually develop and extend their craft.

In this light, **Sandra Turner-Barlow** has established a significant footprint in the gallery, attracting both national and local plaudits. A consortia of local art-lovers saw value in sponsoring her art development by funding a period of study in Italy and Europe more generally. The *Welcome Swallow Gallery* was able to secure some of the output from this initiative, to form the basis of the exhibition, *Out of Italy*.

Alongside Sandra's body of work, Italian artist **Elena Brambilla**, now living in New Zealand, has provided compositions that reflect on her own origins.

Neither artist nor the gallery would claim that the thirty-six pieces on display present a definitive narrative of Italy, but what we can see is a series of insights and commentary that may pointedly

provoke memories for those who are familiar with their own Italian travels or perhaps a vicarious journey for those unfamiliar with the country.

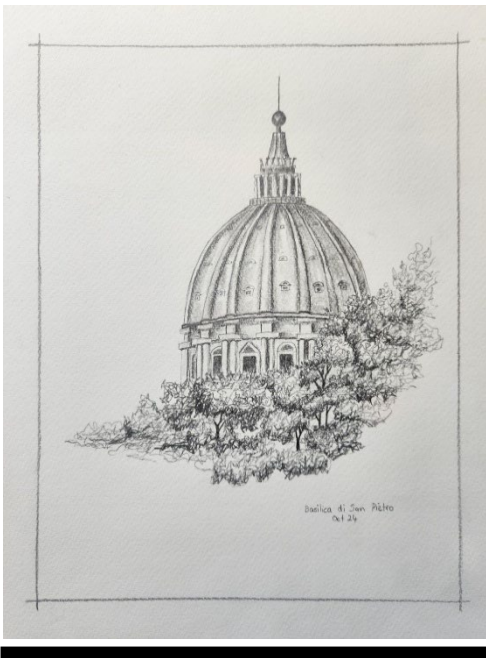
What does the viewer see? As some of the plates on the gallery walls attest, the initial foray into representative art is to invest in a series of studies, drawings that form the basis on an ongoing pattern of reflection and thought. Following in the footsteps of **JMW Turner**, our own Turner-Barlow has used this methodology to capture the essence of her observations.

At the same time, both artists have sought to compose larger Italian themes that are unmistakable illustrations of passion and 'amore'. We can see the magnificent majesty of centuries old buildings alongside artifacts of today. The old and the new, side by side, occupying the same spaces.

There are visions of religious awe together with examples of social and occupational life, fruits, fashion and Ferrari. Above all the artistic insights shared, this, is an exhibition that celebrates the passion of all things Italian.



1. 2.



Sandra Turner-Barlow
St. Peter's Basilica, Vaticano I
Graphite
300x230mm
Price: \$1050



Sandra Turner-Barlow
Arco di Tito, Roma I
Graphite
250x250mm
Price: \$1250

3.

4.



Sandra Turner-Barlow
Arco di Tito, Roma II
Watercolour
350x350mm
Price: \$1750



Sandra Turner-Barlow
St. Peter's Basilica, Vaticano II
Watercolour
400x350mm
Price: \$1500

5.



Elena Brambilla

Liguria: Olive
 Watercolour
 130x185mm
 Price: \$650

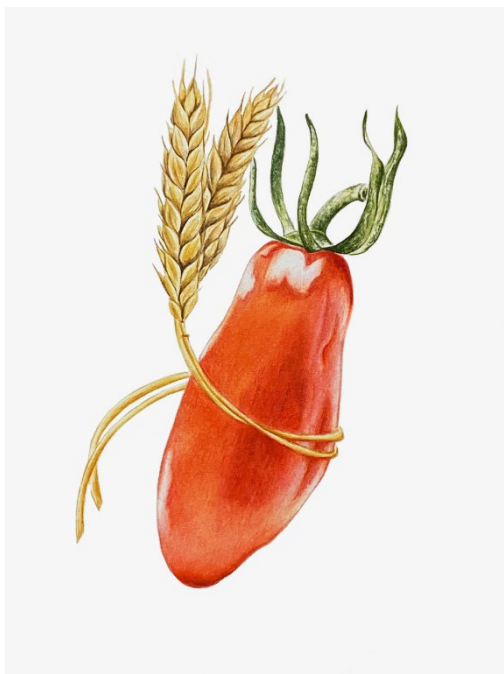
6.



Elena Brambilla

Franciacorta: Uva
 Ink and Watercolour
 305x228mm
 Price: \$1300

7.



Elena Brambilla

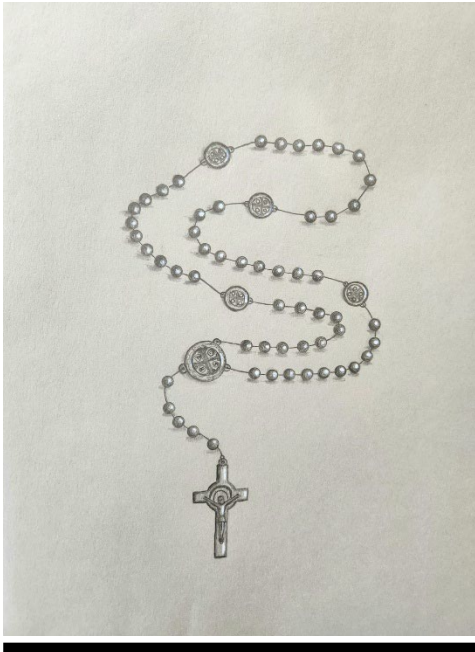
Campania: Pasta al Pomodoro – The Flavour Embrace
 Watercolour
 305x228mm
 Price: \$850

8.



Elena Brambilla

Amalfi: Limoni
 Ink and Watercolour
 147x210mm
 Price: \$650



9.

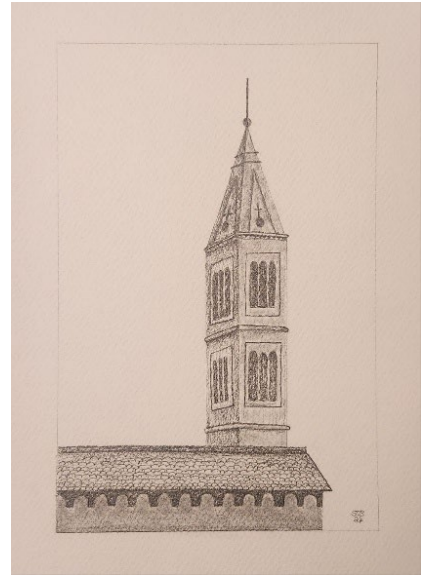
Sandra Turner-Barlow
Rosario
Graphite
350x250mm
Price: \$1000



11.

Sandra Turner-Barlow
Vaticano
Graphite
220x300mm
Price: \$900

10.



Sandra Turner-Barlow
Campanile
Graphite
250x170mm
Price: \$500

12.



Elena Brambilla
Convento Frati Cappuccini San
Francesco d'Assisi, Monza
Ink and Watercolour
292x227mm
Price: \$1100

13.



Sandra Turner-Barlow

The Priest

Graphite

350x250mm

Price: \$900

14.



Sandra Turner-Barlow

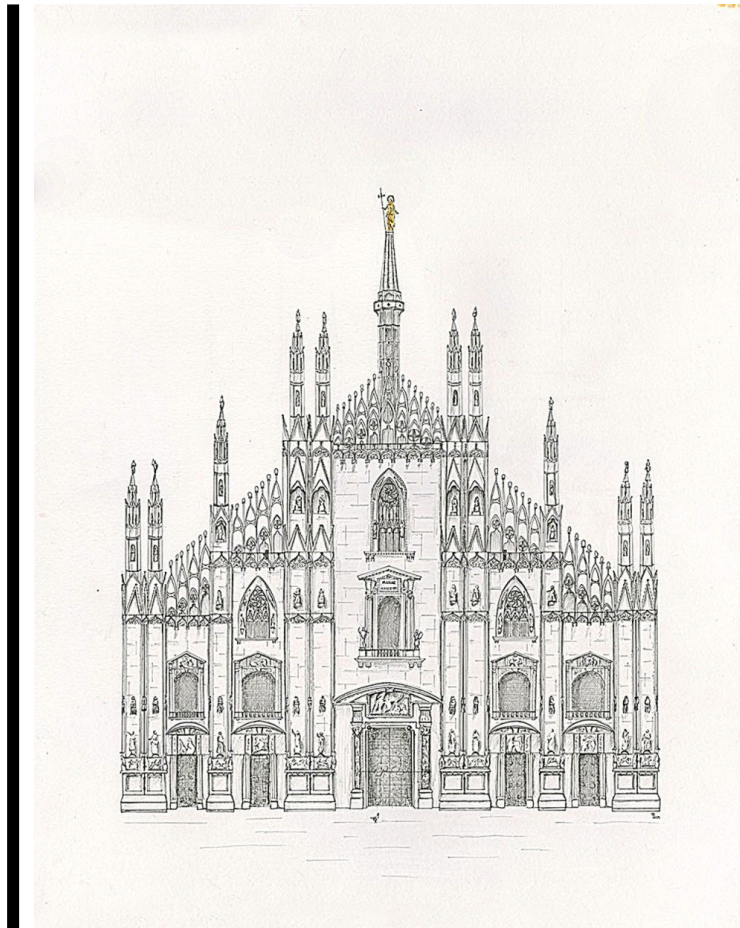
La Creazione

Graphite

220x300mm

Price: \$750

15.



Elena Brambilla

Piccione con

Duomo, Milano

Ink and Watercolour

on Bristol Board

590x500mm

Price: \$2750

16.



Sandra Turner-Barlow

Vespa

Graphite

200x280mm

Price: \$750

17.



Elena Brambilla

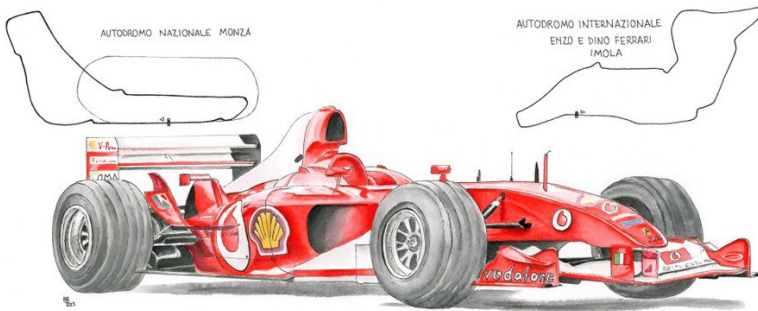
A Day at the Office

Watercolour

410x380mm

Price: \$2750

18.



Elena Brambilla

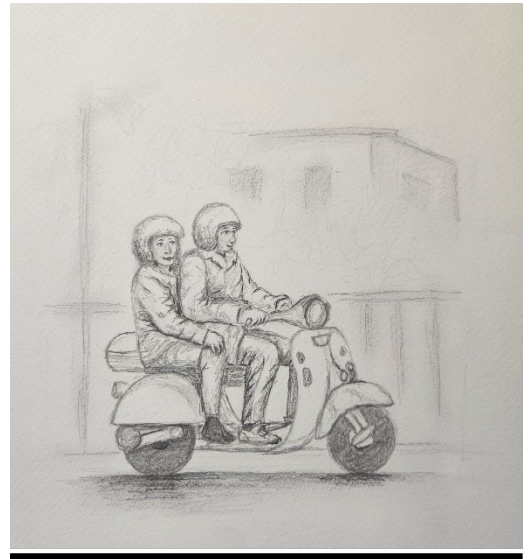
Ferrari F2003-GA

Ink and Watercolour

185x480mm

Price: \$2500

19.



Sandra Turner-Barlow

Vespa Life – La Bella Vita

Graphite

250x200mm

Price: \$750

20.



Sandra Turner-Barlow
 San Luca Madonna, Bologna I
 Graphite
 300x220mm
 Price: \$900

21.



Sandra Turner-Barlow
 Going Somewhere
 Watercolour
 200x270mm
 Price: \$900

23.



Sandra Turner-Barlow
 San Luca Madonna, Bologna II
 Watercolour
 400x260mm
 Price: \$1300

22.



Sandra Turner-Barlow
 Pasta Time!
 Oil on Canvas
 300x250mm
 Price: \$1100

24.



Sandra Turner-Barlow

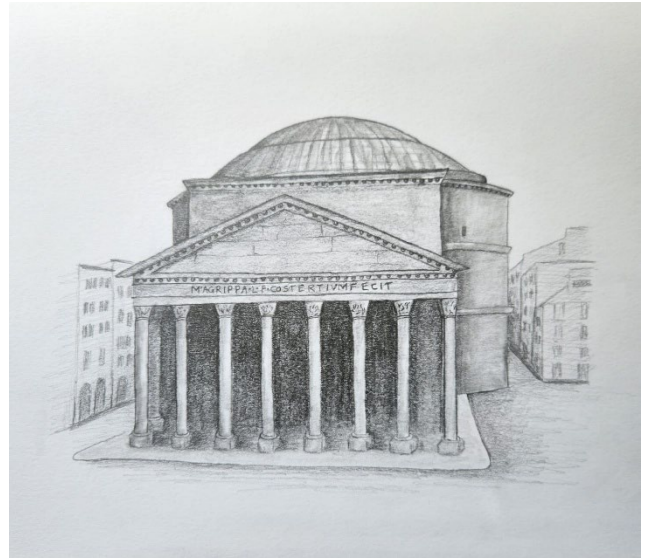
Colosseo, Roma

Graphite

250x330mm

Price: \$900

25.



Sandra Turner-Barlow

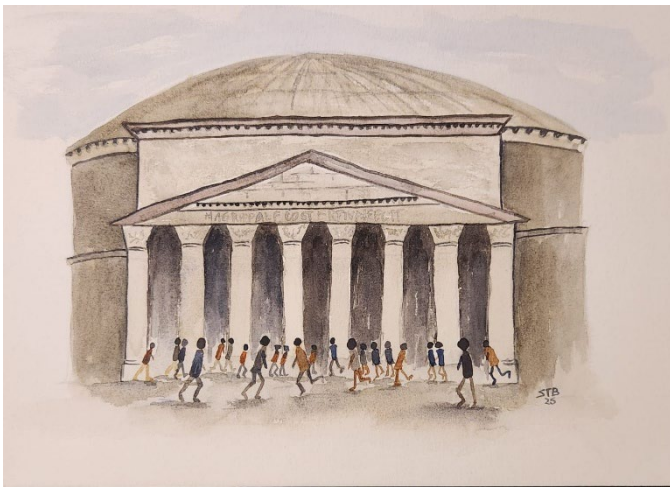
Pantheon, Roma

Graphite

240x330mm

Price: \$1200

26.



Sandra Turner-Barlow

Pantheon People, Roma

Watercolour

200x250mm

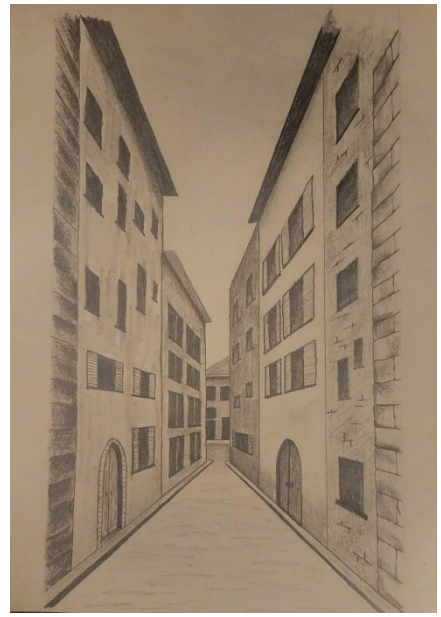
Price: \$1100

27.



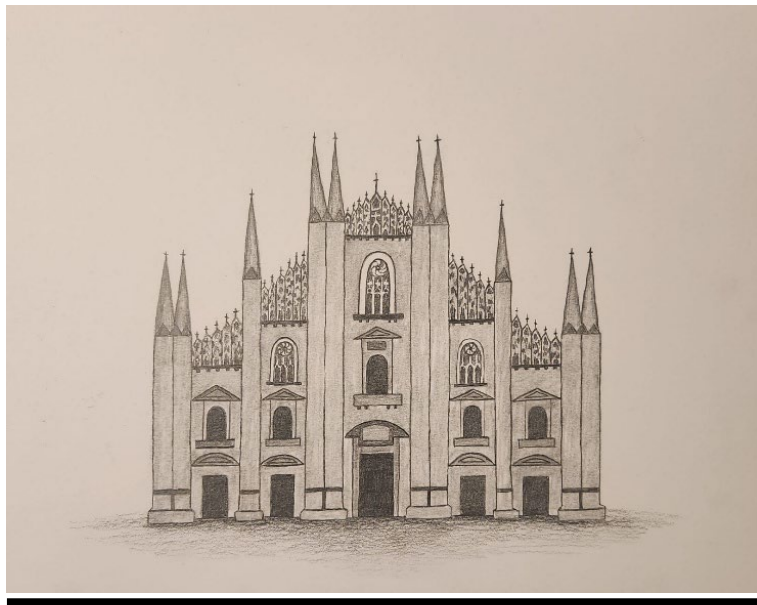
Sandra Turner-Barlow
Ponte Vecchio, Firenze
Graphite
220x260
Price: \$900

28.



Sandra Turner-Barlow
Via San Giovanni, Firenze
Graphite
400x350mm
Price: \$900

29.



Sandra Turner-Barlow
Duomo di Milano
Graphite
250x300mm
Price: \$950



30.

Sandra Turner-Barlow

Via Italia

Watercolour

300x220mm

Prices: \$1500



31.

Sandra Turner-Barlow

Via Rizzoli, Torre degli Asinelli, Firenze

Watercolour

300x230mm

Price: \$1500



32.

Sandra Turner-Barlow

Due Cupole

Watercolour

250x180mm

Price: \$1100

33.



Sandra Turner-Barlow

Bedogno

Watercolour

200x200mm

Price: \$1100



34. 35.



Sandra Turner-Barlow
Dietro la Persiana
Watercolour
520x350mm
Price: \$1550

Sandra Turner-Barlow
Italia
Acrylic on Board
600x400mm
Price: \$3500

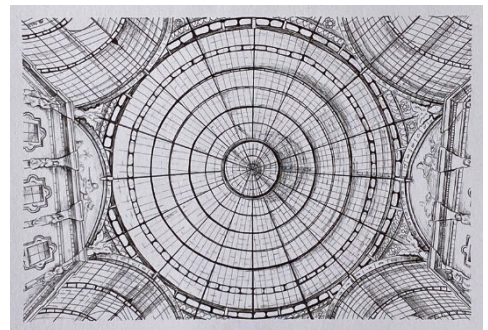
36.

Entrance

Octagon



Glass Dome



Elena Brambilla
Galleria Vittorio Emanuele II, Milano
Ink on Paper
600x1100mm
Price: \$3500



Sandra Turner-Barlow

Sandra Turner-Barlow is no stranger to the *Welcome Swallow Gallery*, having featured in many exhibitions, including her solo, *Audi Five Cities Showcase: Moving Towards*. With all compositions sold the showcase achieved national prominence.

A consortia of art lovers saw Turner-Barlow's work as a significant contribution to New Zealand art and accordingly provided funds for her to study in Italy while undertaking a European-wide grand art tour.

The gallery has been fortunate to secure and host the *Out of Italy* exhibition that represents some of the work that has resulted from this initiative.

Presenting some 30 pieces, Turner-Barlow's work, much like the artists of the 18th and 19th centuries who undertook grand tours of Europe, appear as a series of studies and interpretations taken from her exposure to the Italian context.

We encounter a number of fine graphite works, watercolours that lend a timeless feel to her chosen subject and acrylics and oils that are used for dramatic expressionism and composition depth that ask questions of her views of Italy.

We are treated to an art narrative that is rich in classical Italian history while seeing layers of modern living captured in the same timeless space.

My illustrious Lordship, I'll show you what a woman can do
- Artemisia Gentileschi



Elena Brambilla

Elena Brambilla is an Italian artist who now lives permanently in New Zealand. For a number of years her interest has been in developing her artistry around botanical illustration and accordingly has presented many such compositions with the gallery.

Elena's artistic preferences are bounded by watercolour and meticulous draughtsmanship, typically with ink. With these skills she teaches sold-out art classes. In addition to botanical illustration, Elena's subjects include birds, fish and exquisite floral patterns.

With her native Italian background Elena was invited to be part of the *Out of Italy* exhibition.

In this exhibition, we see Elena's love for botanical subjects that are associated with various regions within Italy, while also capturing, from her own home town, the famous Milano Galleria.

Structures and artifacts are also part of her portfolio. It is hard to imagine any exhibition concerning Italy without an illustration of the famed Ferrari and indeed Prada shoes. So here they are, together with the church in Monza, where she was married.

As an Italian citizen living in New Zealand, we are able to see how the artist reflects back on her own origins. The results are both formidable and thrilling.

Genius is eternal patience – Michelangelo



Welcome Swallow Fine Art Gallery Honour Board



The Volunteers and Trustees

Principal Patron & Benefactor

~ Montana Group ~

Organizations

Ebbett Audi

Pack & Send

Craigs Investments

DB Chartered Accountants

Enlighten Designs

Inspiros Worldwide Ltd

NAR Foundation

Individuals

Clive and Dorothy Gilson

Joanne Tomlinson

Jill Tucker

Catherine Smith

Elena Scaramuzza

Organisations funded

Current organisations:

Women's Refuge Tokoroa

Pillars

Kiwican

2020 Women's Refuge, Hamilton

2019 Parent to Parent

True Colours

2018 Parent to Parent

Women's Refuge, Hamilton

2017 Parent to Parent

Supporters

Books for Kids

Porritt Builders

The Listening Post

Paul Lisignoli

Barry Lafferty

CONTACT DETAILS AND SOCIAL MEDIA

e-mail welcomeswallow.nz@gmail.com; Tel: 07-858-3964;
378 Grey St Hamilton East

YOUTUBE: www.youtube.com/channel/UCrn5EKzvZ7uSmHJP27bciNQ

WEBSITE: www.wsgalleryandgifts.com

FACEBOOK: www.facebook.com/thewelcomeswallow/

INSTAGRAM: www.instagram.com/wsgalleryandgifts/

PLEASE
VISIT