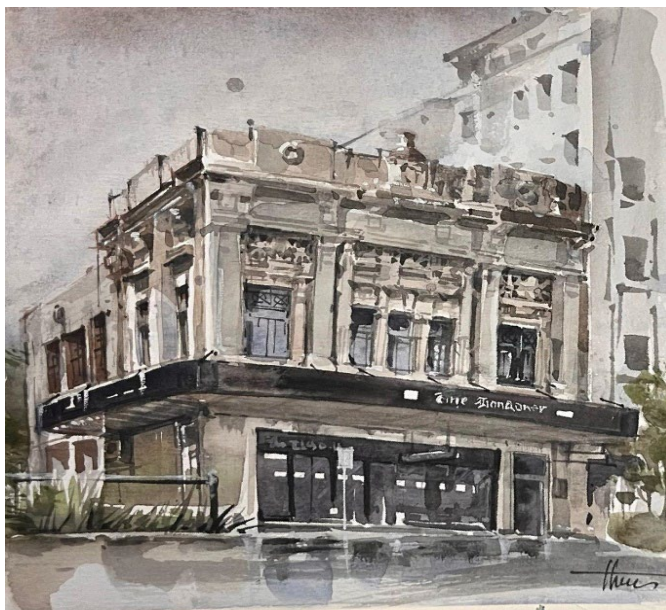


The Welcome Swallow Gallery

The
Waikato
Watercolourists III

with

Stephen Milner
presenting
~ Timeless ~



MONTANA
FOOD AND EVENTS

Exhibition Sponsors

Exhibition Catalogue

10th Feb - 31st March
2023



The Waikato Watercolourists III *with* Timeless

This is the third *Welcome Swallow Gallery* exhibition that has featured the Waikato in watercolour. On this occasion it is presented side by side with **Stephen Milner's** landscape photographic exhibition, *Timeless*.

The previous two *Waikato Watercolourist* exhibitions, (see Catalogue covers below) attracted wide interest and coverage throughout New Zealand and overseas. This new exhibition builds on the traditions so established, presenting a visual feast of iconic structures, flora, fauna and spectacular vistas; all splendid illustrations using the medium of watercolour.

We are also introducing new artists to the gallery. **Jieyi Laing** presents two beautiful compositions of Hamilton Gardens together with a view of the lavender fields of Te Awamutu. **Elena Brambilla** provides two exquisite detailed still life studies of fruits that are prolific in the Waikato region.

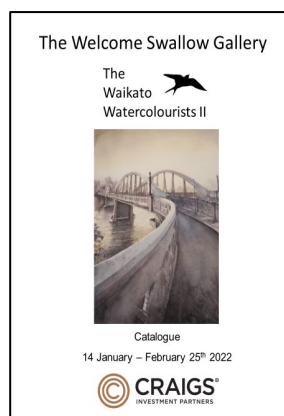
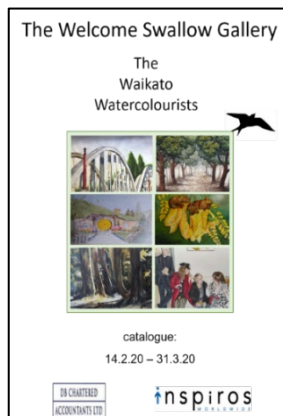
The exhibition does not disappoint when it comes to the traditional landscapes from **Bernadette Parsons** and **Martin Necas**, while both **Hong Cumming** and **Rebecca Dowman-Ngapo** are exhibiting novel structures, respectively in the form of an historic Victoria Street building and an innovative view of Victoria Bridge. **Riff-Raff** also makes his first dramatic appearance at the *Welcome Swallow Gallery*.

Sandra Barlow takes a rural brief with three flora pieces and a woolshed, symbolic of an era fast disappearing in the Waikato and elsewhere.

Finally, **Dejin Lu, Gavin Smith and Jing Liu** present their signature works that capture the ambience of the Waikato through finely drawn birds, boats, woodland and flora.

Overall this exhibition offers a veritable smorgasbord of watercolours, that are resplendent of the Waikato.

Award winning artist **Stephen Milner** is also new to the gallery. Alongside the watercolour artists, he presents his own stunning landscape photographic exhibition, *Timeless*. This includes vast canvas compositions that in some cases cover several square meters of the gallery walls. Not to be missed! Although an entirely different medium, there are clear parallels here with the watercolourists' exhibition. Enjoy!



1.



Dejin Lu

Spring Rosella

300x200mm

Price: \$275

2.



Dejin Lu

A Friendly Robin

300x200mm

Price: \$275

3.



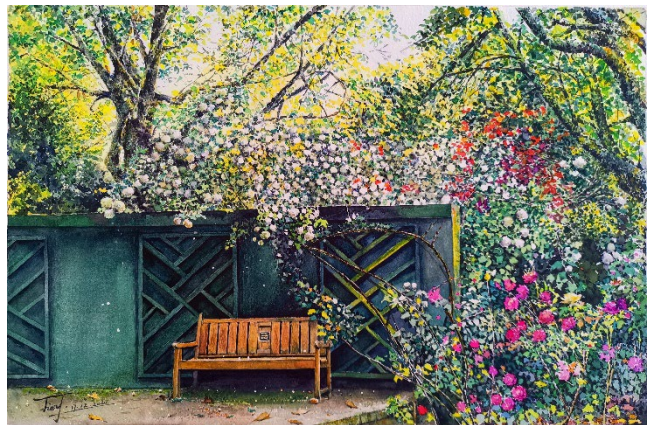
Jieyi Liang

Hamilton Gardens in December

430x580mm

Price: \$1250

4.



Jieyi Liang

Hamilton Gardens in January

460x620mm

Price: \$1250

5.



Jieyi Liang

Lavender Field, Te Awamutu

330x410mm

Price: \$800

6.



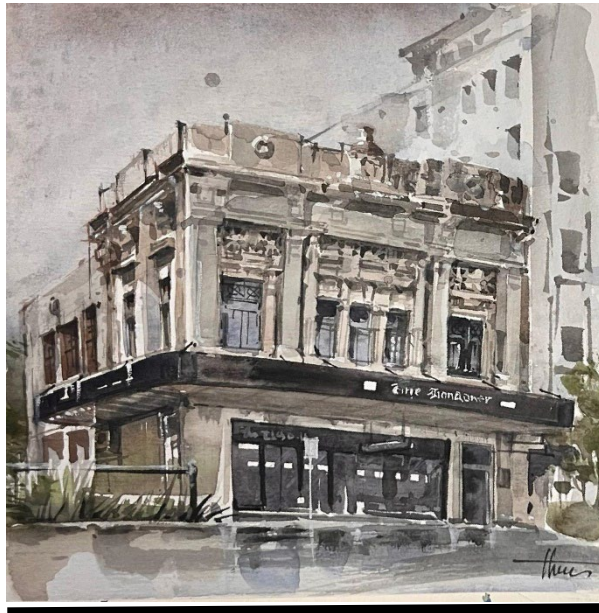
Jing Liu

Cyclamen: 仙客來

320x320mm d.

Price: \$860

7.



Hong Cumming

596 Victoria Street*

195x195mm

Price: \$600

** Now occupied by 'The Londoner', this building was the site of the 'Storkline' furniture store that sold iconic Kiwi folding chairs, as seen in the gallery*

8.



Hong Cumming

Bad Hair Day

195x195mm

Price: \$450



9.



Rebecca Dowman-Ngapo

And Nothing Can Ever Be The Same

605x605mm

Price: \$1750

10.



Rebecca Dowman-Ngapo

Te Rohe Pōtae

385x385mm

Price: \$750

12.

11.



Rebecca Dowman-Ngapo

Kawakawa Dreams

320x420mm

Price: \$980



Rebecca Dowman-Ngapo

Victoria's Curve

720x520mm

Price: \$2000



13.

Sandra Barlow

Fog Flower I

230x190mm

Price: \$290



14.

Sandra Barlow

Fog Flower II

230x190mm

Price: \$290

15.



Sandra Barlow

Here's Looking at You Kid

440x340mm

Price: \$700

16.



Sandra Barlow

Woolshed, If The Walls Could Talk

330x400mm

Price: \$850

17.



Elena Brambilla

Lemonade Fruit

310x225mm

Price: \$800



Elena Brambilla

Persimmon

190x180mm

Price \$700

18.



Gavin Smith

Fishermen's Wharf, Raglan

330x480mm

Price: \$1580

20.



19.

Gavin Smith

Morning Walk, Pirongia

370x330mm

Price: \$1380

21.



Bernadette Parsons

Whangamarino River

450x750mm

Price: \$1250

22.



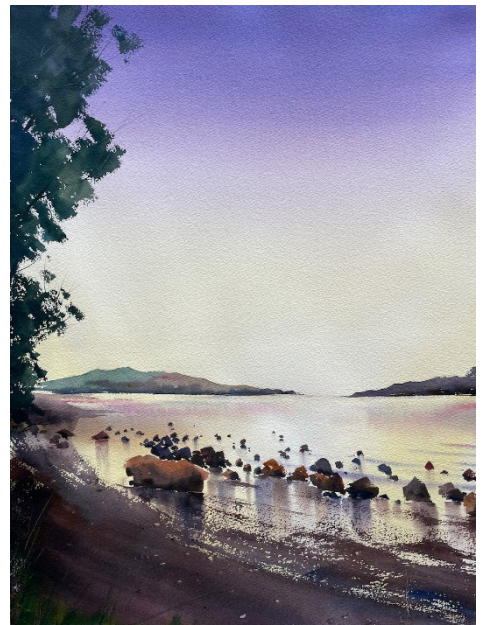
Bernadette Parsons

Port Waikato

400x750mm

Price: \$1000

24.



Martin Necas

Raglan Shore

600mm x 447mm

Price: \$1200

23.



Bernadette Parsons

Coromandel

600x750mm

Price: \$1800

25.



Martin Necas

Mighty River at Narrows Landing

287x410mm

Price: \$550

26.



Martin Necas

Sanctuary Mountain across

Lake Karapiro

447mm x 600mm

Price: \$750

STEPHEN MILNER

~ Timeless ~

As an award-winning fine art landscape photographer, Stephen Milner has amassed a superb body of work that uniquely captures the drama, the beauty, the majesty of New Zealand landscapes. Using *photographic artwork*, the *Timeless* nature of Stephen's art can be seen in this exhibition where he has expanded his work into true landscape dimensions. The *Welcome Swallow Gallery* has never hosted perspectives and indeed images that adorn and so dominate its gallery walls.

Additional to Stephen being a recent Finalist in the prestigious, *New Zealand Geographic Photographer of the Year*, he has received bronze medals for three submissions to the *Epson International Pano Awards*. Stephen's published books include *Volcanic Aotearoa*.



STEPHEN MILNER
FINE ART LANDSCAPE

27.



These compositions use an innovative fabric tension system that enables extra large displays to better capture the artwork

Stephen Milner

Ruapehu
1060x3000mm
Price: \$2400

28.



29.



Stephen Milner

Mitre Peak,
Milford Sound
1406x2500mm
Price: \$2400

Stephen Milner

Stirling Falls,
Milford Sound
1125x2000mm
Price: \$1700

30.



Stephen Milner

Transition
530x1500mm
Price: \$950

31.



Stephen Milner

And Child

1000x1000mm

Price: \$950

32.



Stephen Milner

Stand Alone, Waikato

1200x1500mm

Price: \$1400

33.



Stephen Milner

Together

1000x1000mm

Price: \$950

34.



Stephen Milner

To a Point

1000x1000mm

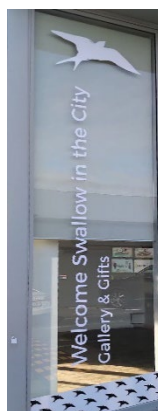
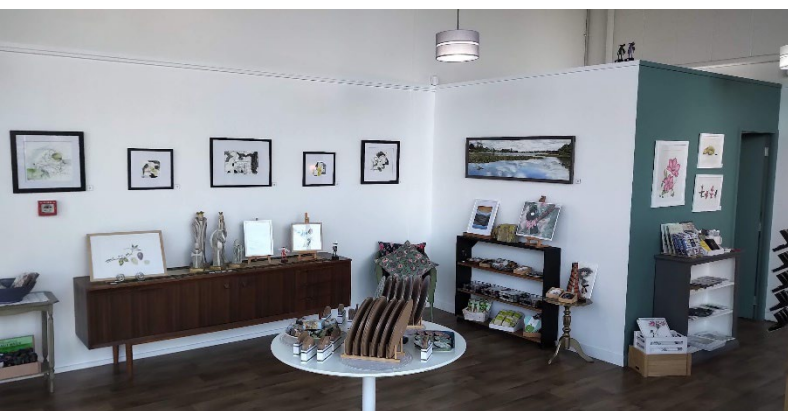
Price: \$950



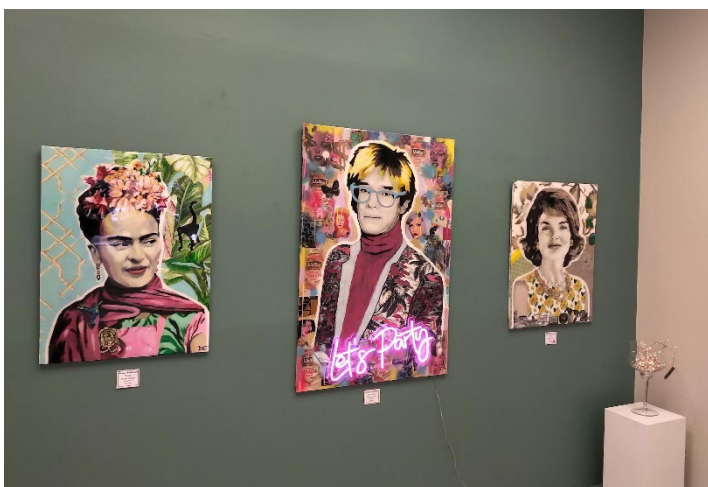
PLEASE VISIT



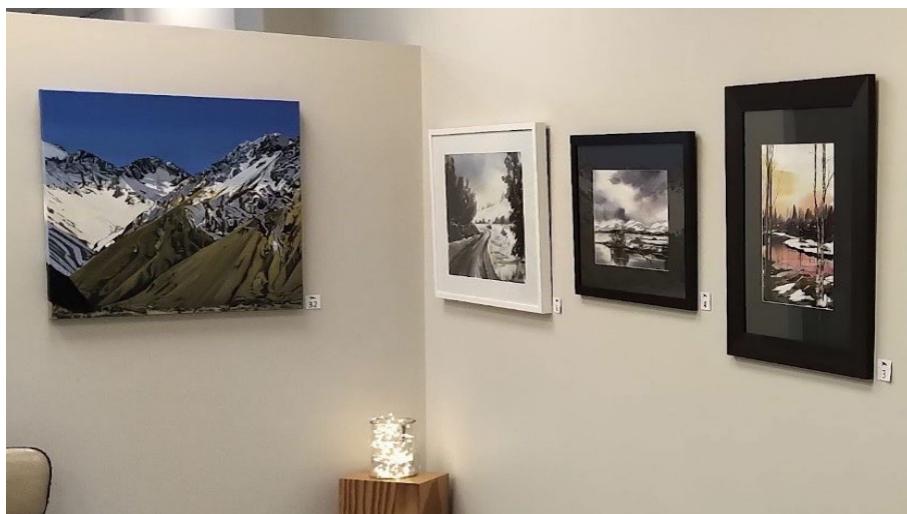
YOUTUBE: www.youtube.com/channel/UCrn5EKzvZ7uSmHJP27bciNQ



WEBSITE: www.wsgalleryandgifts.com



FACEBOOK: www.facebook.com/thewelcomeswallow/



Welcome Swallow Gallery & Gifts

378 Grey Street, Hamilton East | Tel. 07 858
3964 | Opening Hours
Mon-Friday 9.30am – 4.30pm;
Sat 10am – 2pm

109 Ward St Hamilton CBD | Tel:
07-834-0500 | Opening hours Tues
- Friday 10am—3pm
www.wsgalleryandgifts.com
WelcomeSwallow.nz@gmail.com

INSTAGRAM: www.instagram.com/wsgalleryandgifts/