



# THE WELCOME SWALLOW GALLERY



## Winter Bright

Catalogue: Paintings available while in Lockdown

23<sup>rd</sup> July – 10<sup>th</sup> September 2021

# ~ Winter Bright ~

This exhibition at the *Welcome Swallow Gallery* anchors its curatorial theme, strongly flavoured towards seasonal reflections that capture the ways in which a dull and colourless winter can be refracted through a brighter lens.

This positive narrative thread was established at the beginning of the year with the exhibition, *Joy of Humanity: People & Place* that anticipated a post covid world with the human spirit re-asserting itself. *Winter Bright* likewise engages with the beauty and drama of the winter season, both in nature and how people through their own agency introduce ways to mitigate subdued hues with colourful accents. This curatorial theme encourages the metaphor of seasons of life.

The exhibition is also novel in terms of the artists represented. On this occasion, our established local gallery artists are joined by peers from further afield. Marzena Wilkes from the UK presents three eye-catching tree compositions that echo Vincent Van Gogh's 1888 *Pink Peach Trees in Blossom* series, two of which are further enhanced with intimate motifs.

Arna Marshall from Christchurch is primarily a landscape artist who has won many awards for her work. For this exhibition she has painted her signature vivid flaxes that punctuate winter-themed mountains.

Shaheer Shabbir and Chloe Sutherland follow up their school student exhibition work, respectively, with winter landscapes that feature colourful flora and bird life.

Hailing from Wellington, Helen Cairney presents at *Welcome Swallow* for the fourth

time. Seen here is an exquisite study of waxeyes whose green plumage brightens up the bird feeders during the winter period.

Adding to this exhibition, Sandra Barlow presents two stunningly colourful highly stylized cityscapes of Hamilton and Auckland; while Martin Necas's winter landscapes are imagined in sharp, bright tones that invite the viewer to experience the special feel of winter.

Juliet Roper offers winter camelias, a plethora of colourful umbrellas set against the drenching rain and a portrait that offers a fleeting winter glance. Rebecca Dowman-Ngapo's portrait series sets the thermometer to a stunning 'glacial blue cold' that highlights a magical personal literary winter narrative.

Toni Kingstone provides two large acrylic and resin compositions that present a kaleidoscope of colours to enjoy, while Gavin Smith demonstrates his artistry with two winter street scenes alongside his signature boat compositions each of which contain water reflections that both deepen and expand the scope of each painting.

Finally, Kirsten McIntosh expands her well established colour palette with vivid splashes of verdant foliage and light that expand our views of *Winter Bright*.

As you browse through this catalogue, we encourage you to enjoy these art pieces in the comfort of your own surroundings. Both the artists and the cause are well worth your investment.



1.



**Sandra Barlow**

Awa Crossing

Oil on Board

600x500mm

Price: \$1350

4.



**Martin Necas**

On the Banks of Lake Tekapo

Watercolour

500x660mm

Price: \$600

5.



**Martin Necas**

Follow me

Watercolour

530x730mm

Price: \$1200

6.



**Martin Necas**

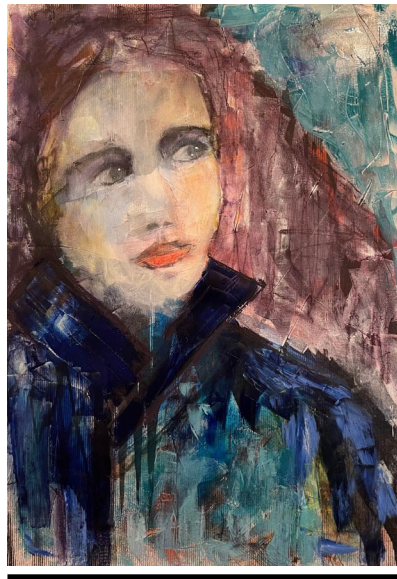
Where Will You Go?

Watercolour

630x830mm

Price: \$1500

8.



**Juliet Roper**

Glance Acrylic  
on Paper

594x420mm

Price: \$800

13.



**Toni Kingstone**  
Stairway to Heaven  
Acrylic and Resin  
800mm d.  
Price: \$1650

16.

15.



**Shaheer Shabbir**  
The Girl and The Greenfinch  
Acrylic on Canvas  
460x610mm  
Price: \$375



**Chloe Sutherland**  
Flowers  
Watercolour  
297x200mm  
Price: \$250



With each strike, she ignites her dreams; No one imagined what beautiful things she had seen - **Little Match Girl**

Let the whole world be as I am. Let winter rule always. - **Snow Queen**



---

**Rebecca**

17. **Dowman-Ngapo** 18.  
Watercolours 20.  
900x400mm  
Price: \$1100 each

---

Take her head upon your knee; Say to her, "My dear, my dear, It is not so dreadful here." Lost in Hell, - **Persephone**

He's truly an artist, known as Bringer of Ice, and although his heart is cold, he's really quite nice. - **Jack Frost**



23.



**Gavin Smith**

High and Dry Sulphur Point

Watercolour

360x480mm

Price: \$1450

24.



**Gavin Smith**

Harbour Entrance Sthn France

Watercolour

360x480mm

Price: \$1850

26.



**Kirsten McIntosh**

Washed with Sunlight

Oil 910x610mm

Price: \$1700

28.



**Kirsten McIntosh**

Lost moments in Hamilton Garden

Oil 910x610mm Price: \$1700



29. 30.



---

**Kirsten McIntosh**

Winter's Aura – Mount Maunganui

Oil

610mm d.

Price: \$1000



---

**Arna Marshall**

Spring Snow at Tekapo

Acrylic

500mm d.

Price: \$950

31.



---

**Arna Marshall**

Lake Wakitipu

Acrylic

500mm d.

Price: \$950

e-mail [welcomeswallow.nz@gmail.com](mailto:welcomeswallow.nz@gmail.com);  
Tel: 07-858-3964; 378 Grey St. Hamilton East

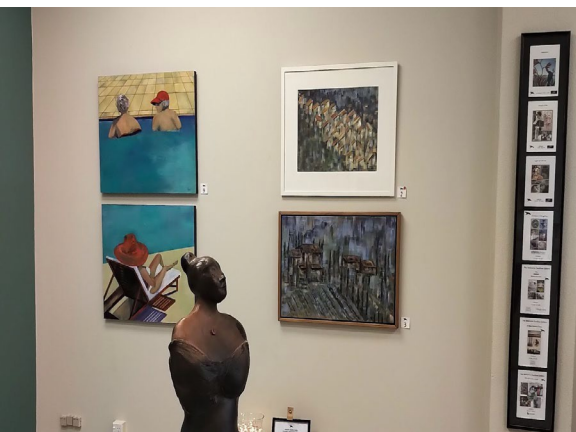
PLEASE VISIT



WEBSITE: [www.wsgalleryandgifts.com](http://www.wsgalleryandgifts.com)



FACEBOOK: [www.facebook.com/thewelcomeswallow/](http://www.facebook.com/thewelcomeswallow/)



INSTAGRAM: [www.instagram.com/wsgalleryandgifts/](http://www.instagram.com/wsgalleryandgifts/)

INSTAGRAM: [www.instagram.com/welcome\\_swallow\\_gifts/](http://www.instagram.com/welcome_swallow_gifts/)