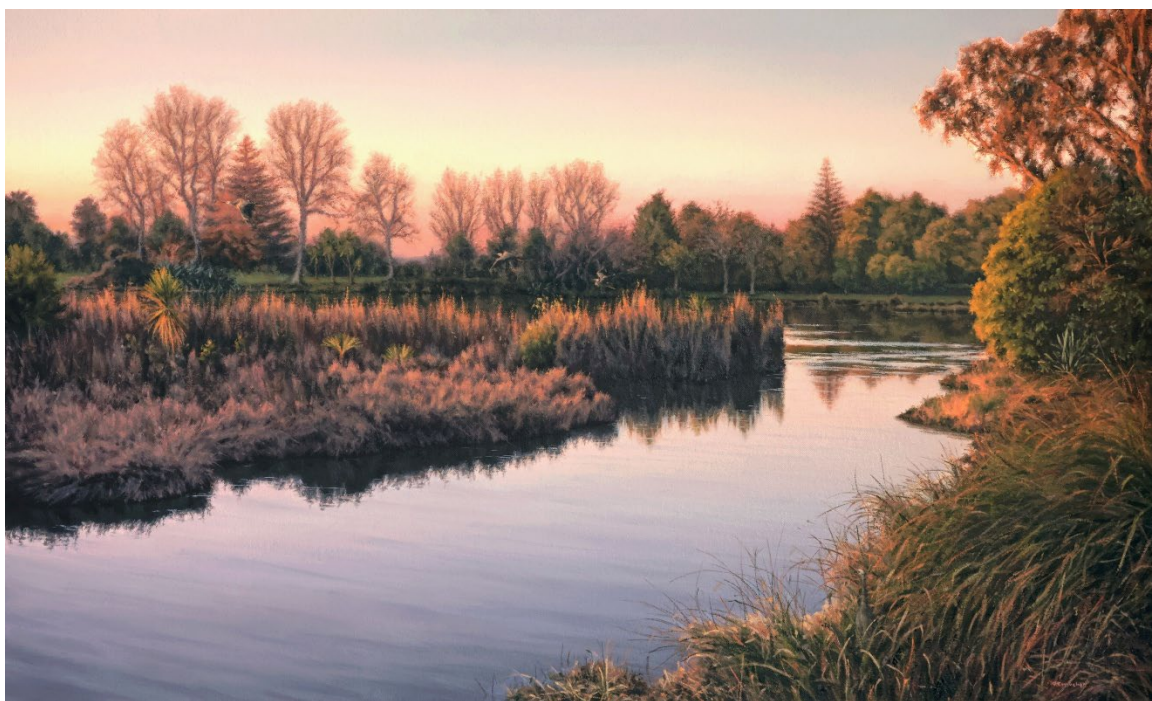




The Welcome Swallow Gallery

~ The Winter Collection 2025 ~



Rosanne Croucher

Lake Rotokaeo in Forest Lake

Catalogue
6th June – 1st August
Sponsored by:

MONTANA
FOOD AND EVENTS



~ Winter Collection 2025 ~

As in previous years, the 2025 edition of the Winter Collection exhibition is eclectic in content and dynamic and diverse in style.

Typically, the gallery requests submissions from artists that follow a tightly worded brief. In this way the gallery is able to present deep reflective commentary while contributing to the inventory of New Zealand art history. However, in a collection such as this, each artist has the opportunity to bring together their own subject matter, media and genre. There is no overarching brief that aims to create a broader art-inspired commentary.

Moreover it is a collection that occurs *in* Winter rather than a collection that represents Winter themes. Above all else this is 'an artists' exhibition.

While the origins of each contribution is mutually exclusive it is still possible to draw some tentative reflections of emerging themes. Landscape images prevail. This should not surprise us. New Zealand vistas, if nothing else were meant for social media sharing. Indeed, **Michele Rumney's** four fabulous fauvist compositions, spliced with figurative nuance,

provide suggestive references to the online world.

In direct contrast, **Rosanne Croucher's** en plein and landscape works embody serene photo realism. **Toni Kingstone** mixes her 'magical realism' pieces with an extraordinary expressive painting entitled *FutureTron*. Adding to this, **Juliet Roper** presents four dynamic abstract expressionistic acrylics, while **Charlotte Giblin** and **Cole Raithby** both rock bold post impressionism to portray their landscape views. Finally, **Gaen's** geometric landscapes when viewed against **Aston Greathead's** classical romantic oil in 'four-colour' compositions from 60 years ago show just how far New Zealand landscape artistry has travelled.

Rebecca Dowman-Ngapo and **Chris Greenslade** present in vibrant watercolours, evocative farmland Waikato narratives, while **Jieyi Liang's** startling trolley of fruit trays is supplemented with two munificent florals. New gallery artist **Jimmy Chang** entices with two figurative abstract pieces while **Kirsten McIntosh** completes this exhibition with her signature florals and an ethereal horizon.

ACCCT Board, June 2025

1.



Michele Rumney
The Social Network
Oil on Canvas
760x760mm
Price: \$1200

2.



Michele Rumney
Hashtag #Garage
Oil on Canvas
650x950mm
Price: \$1450

3.



Michele Rumney
Look Where I've Been
Oil on Canvas
760x760mm
Price: \$1350

4.



Michele Rumney
Women Fishing
Ink and Charcoal
280x400mm
Price: \$950

5.



Toni Kingstone

Girl on A Swing

Acrylic, Resin

300mm d.

Price: \$375

6.



Toni Kingstone

FutureTron

Acrylic

760x1010mm

Price: \$3200

7.



Cole Raithby

Kiss of Winter Farmland

Oil on Canvas

305x406mm

Price: \$650

8.



Toni Kingstone

The Sentinel

Acrylic, Resin

500mm d.

Price: \$675

9.



Gaen

Beyond the Woolshed
Acrylic on Board, Oak Tray
1000x1250mm
Price: \$4900

11.



Jimmy Chang

Being in the Absence of Time
Oil on Canvas
1420x1160mm
Price: \$2750

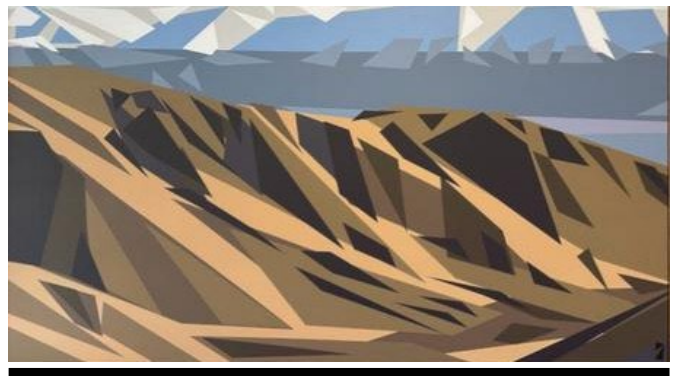
10.



Jimmy Chang

Yellow Window
Oil on Canvas
1120x870mm
Price: \$2250

12.



Gaen

It's a Secret
Acrylic on Board, Oak Tray
900x1600mm
Price:\$5300



13.

Juliet Roper

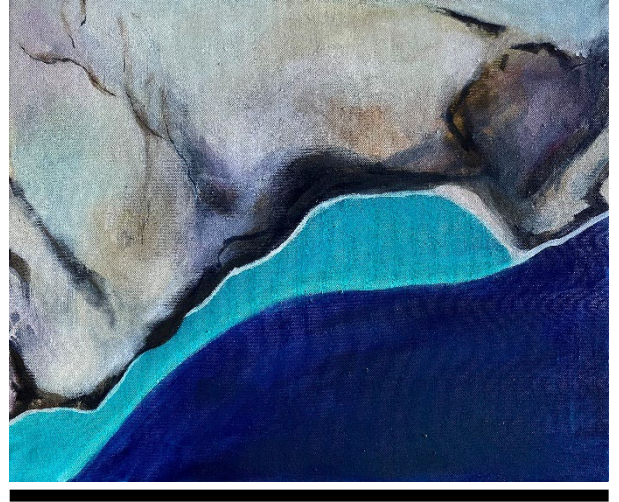
Above and Beyond

Acrylic on Canvas

460x605 mm

Price: \$1800

14.



Juliet Roper

Hidden Treasure

Acrylic on Canvas

405x505mm

Price: \$1600

15.



Juliet Roper

Between a Rock

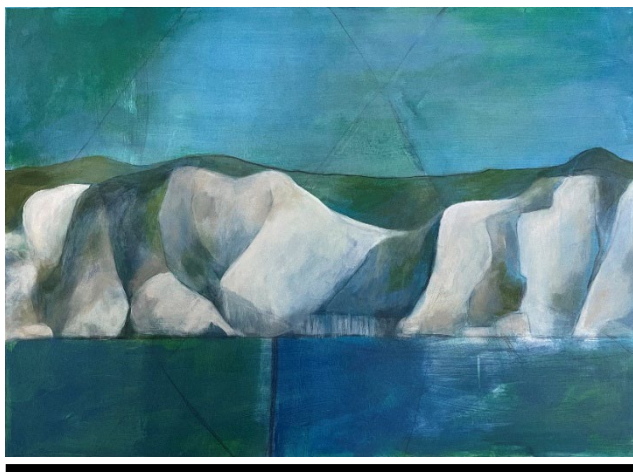
and a Hard Place

Acrylic on Canvas

914x1200mm

Price: \$3500

16.



Juliet Roper
Coromandel Coast
Acrylic on Board
600x840mm
Price: \$2700

Placed 2nd of three Winners



17.

Jieyi Liang
Fruity

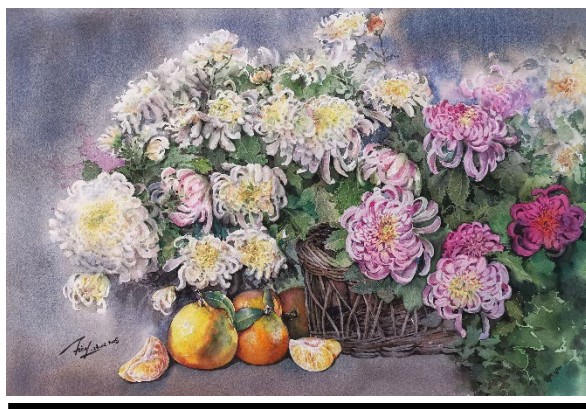
Watercolour
500x380mm
Price: \$1500

18.



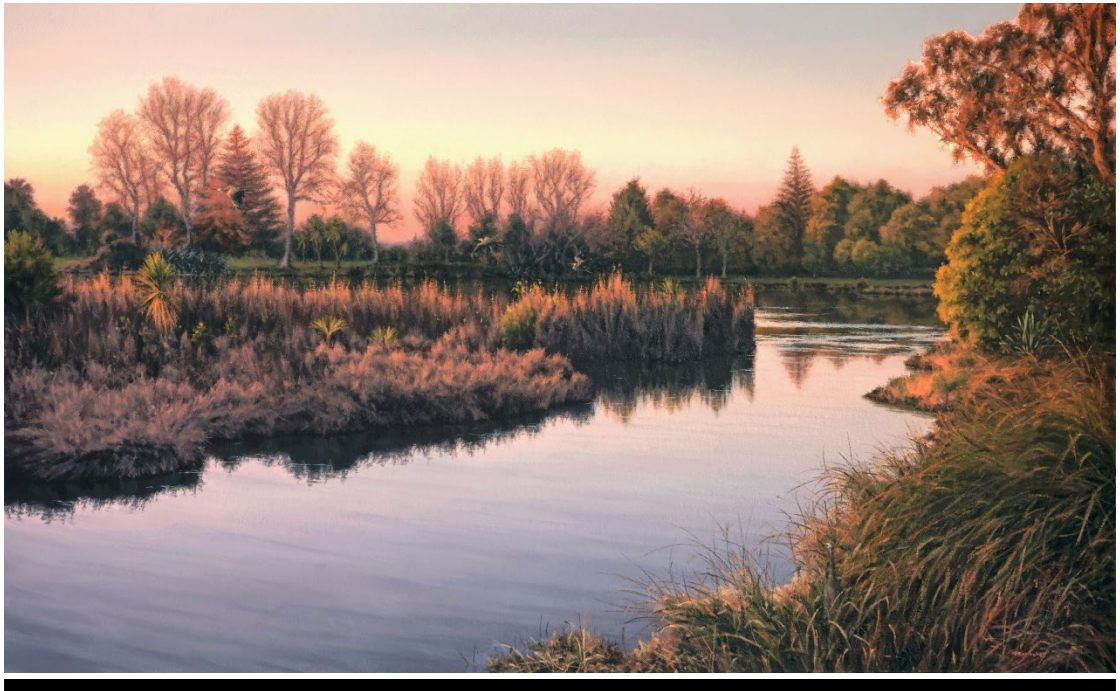
Jieyi Liang
Golden Daisies
Watercolour
380x530mm
Price: \$1750

19.



Jieyi Liang
The Fragrance of Chrysanthemums
Watercolour
380x530mm
Price: \$1750

20.



Rosanne Croucher

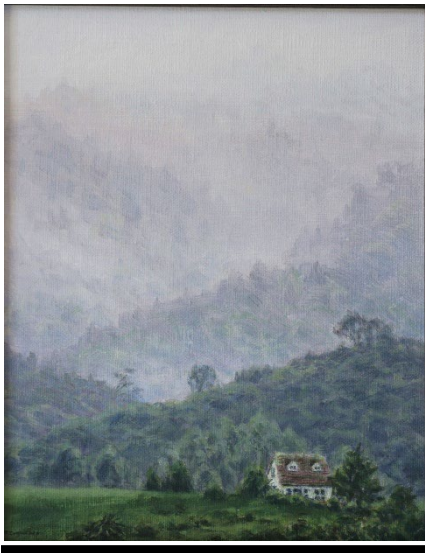
Lake Rotokaeo in Forest Lake

Oil on Panel

450x750mm

Price: \$3500

21.



Rosanne Croucher

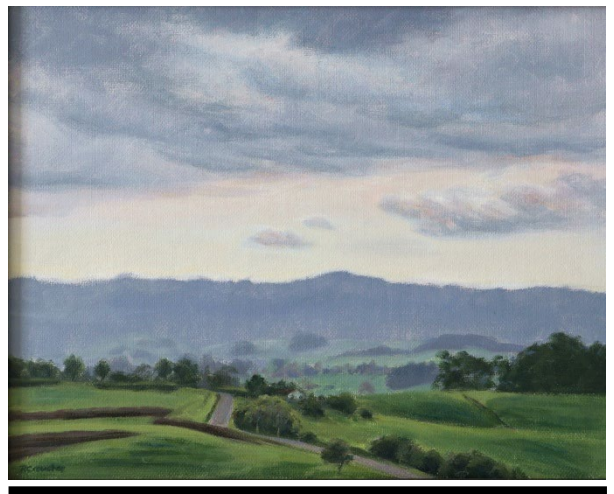
Rain on the Hakarimatas

Acrylic on Linen Panel

250x200 mm

Price: \$680

22.



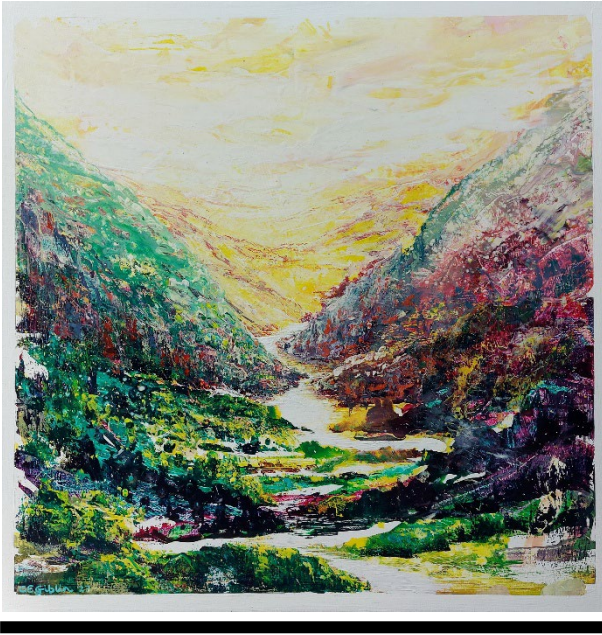
Rosanne Croucher

Afternoon Light at Till's Lookout

Acrylic on Linen Panel

200x250mm

Price: \$680



Charlotte Giblin

This, I Promise
Acrylic on Canvas
762x762mm
Price: \$2400



Charlotte Giblin

Perfect Place to Pause
Acrylic on Canvas
406x406mm
Price: \$880

23.



24.

Charlotte Giblin

Kākāriki in Paradise
Acrylic on Canvas
1220x405mm
Price: \$2400

26.



Rebecca Dowman-Ngapo

Hard Yakka – Shearing Season

Watercolour

300x430mm

Price: \$900

27.



Rebecca Dowman-Ngapo

The Forgotten Workhorse

Watercolour

330x430mm

Price: \$900

28.

29.



Rebecca Dowman-Ngapo

Bugger

Watercolour

320x220mm

Price: \$650



Chris Greenslade

Early Morning Chat on a

Waikato Farm

Watercolour

307x460mm

Price: \$975



Aston Greathead

The Old Wharf from Armers
Beach, Kaikōura
Oil on Board, 380x470mm
Price: \$1950

31.
30.



Kirsten McIntosh

Eternal Bloom: Delphiniums and Roses
Oil, 914x610mm
Price \$3800



32.

Kirsten McIntosh

Ethereal Horizons:
The Light Over Maungatautari
Oil, 914x610mm
Price: \$3800

33.



Kirsten McIntosh

Elysian Garden: Hollyhocks
by the Cottage Path
Oil, 914x610mm
Price: \$3800

Gallery artists presenting in the Winter Collection 2025

Jimmy Chang

Rosanne Croucher

Rebecca Dowman-Ngapo

Gaen

Charlotte Giblin

Aston Greathead

Chris Greenslade

Toni Kingstone

Jieyi Liang

Kirsten McIntosh

Cole Raithby

Juliet Roper

Michele Rumney

CONTACT DETAILS AND SOCIAL MEDIA

e-mail welcomeswallow.nz@gmail.com; Tel: 07-858-3964;
378 Grey St Hamilton East

YOUTUBE: www.youtube.com/channel/UCrn5EKzvZ7uSmHJP27bciNQ

WEBSITE: www.wsgalleryandgifts.com

FACEBOOK: www.facebook.com/thewelcomeswallow/

INSTAGRAM: www.instagram.com/wsgalleryandgifts/

PLEASE
VISIT