

# A Welcome Swallow Gallery Exhibition



catalogue

18.9.20 – 5.1.21



# A Welcome Swallow Exhibition

This exhibition from the *Welcome Swallow Gallery* highlights the varied, splendid talents of our artists. Free from the parameters imposed by a curated theme, each artist has been encouraged to explore their range of interests in style and composition.

**Helen Cairney** continues her exquisite acrylic and pencil studies of New Zealand bird and garden life, evident in her *Tui and Jug* composition that was recently sold from the gallery to an overseas collector. Her subjects are delicately placed in free formed gantries of flora arrangements that enable the viewer to naturally focus on the exceptional artistry of the finely drawn subjects within each painting.

New to the gallery is the art of **Gavin Smith**, who can be described as a traveling artist who depicts evocative scenes that he encounters from all over the world. Here we are treated to a suite of bold watercolours with strong gestural lines and impressions that invite the viewer to enter the scene. Abstract figures can typically be seen in Gavin's work, providing an ethereal timelessness to each composition.

**Yasmin Davis** needs no introduction to our Gallery. Here she provides another ever-popular stunning illustration of her ceramics within the larger narrative of the beloved Koru design.

How the mind interprets what it sees is evocatively captured by **Sandra Barlow's** series, *I want your love I-IV* that stands somewhere between Gustav Klimt's study, *Embracing Couple* that he used for his famous *1901 Beethoven Frieze* and invocations from Lady Gaga's blockbuster recording, *Bad Romance*. Either way, there is much left to contemplate here; the mind may wander between rapture and vulnerability. The firm graphite lines of these compositions belie what is known or otherwise, beyond the physical.

**Kirsten McIntosh** who is also new to the *Welcome Swallow Gallery*, demonstrates that her artistic talents are informed by the landscapes and vistas that she encounters in and around her home in Cambridge. At the same time she incorporates a range of genres from a Henri Rousseau style and method all the way towards impressionistic hints of Klimt. Her compositions are complex, varied, rich and beautiful.

As you browse through this catalogue, we encourage you to enjoy these art pieces in the comfort of your own surroundings. Both the artists and the cause are well worth your investment.

ACCCT Board, September 2020



1.



**Helen Cairney**

Tui in Tree I

Acrylic and pencil on paper

280x270mm

Price: \$475

2.



**Helen Cairney**

Tui in Tree II

Acrylic and pencil on paper

280x270mm

Price: \$475

3.



**Helen Cairney**

Waxeyes I

Acrylic and pencil on paper

280x270mm

Price: \$475

4.



**Helen Cairney**

Waxeyes II

Acrylic and pencil on paper

280x270mm

Price: \$475

5.



**Helen Cairney**

Dandelion VI

Acrylic and pencil on paper

280x270mm

Price: \$475

6.



**Helen Cairney**

Garden Visitor

Acrylic and pencil on paper

280x270mm

Price: \$475

7.



**Helen Cairney**

Saddlebacks I

Acrylic and pencil on paper

280x270mm

Price: \$475

8.



**Rebecca Dowman-Ngapo**

Goddess and the Stars

Watercolour

1030x604mm

Price: \$1,600

9.



**Sandra Barlow**  
 I Want Your Love I  
 Graphite  
 420x300mm  
 Price: \$275

10.



**Sandra Barlow**  
 I Want Your Love II  
 Graphite  
 420x300mm  
 Price: \$275

13.



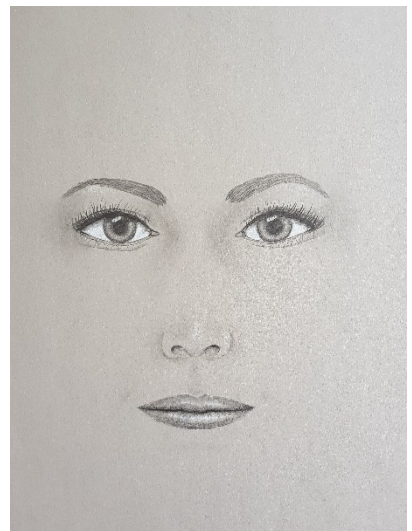
**Sandra Barlow**  
 Heart  
 Graphite  
 42x30mm  
 Price: \$50

11.



**Sandra Barlow**  
 I Want Your Love III  
 Graphite  
 420x300mm  
 Price: \$275

12.



**Sandra Barlow**  
 I Want Your Love IV  
 Graphite  
 420x300mm  
 Price: \$275

14.



**Sandra Barlow**

Solitaire

Watercolour

500x310mm

Price: \$525

15.



**Sandra Barlow**

TOUCH

Watercolour

360x260mm

Price: \$375

16.

*Sample illustration*



**Yasmin Davis**

Koru

Multiple ceramics in situ...

Prices available on separate price list



*Sample tiles*

17.



**Gavin Smith**

Artist Corner, Montmartre

Watercolour

555x475mm

Price: \$760

18.



**Gavin Smith**

Market Day, Firenze

Watercolour

470x490mm

Price: \$580

19.



**Gavin Smith**

Evening on the Harbour

Watercolour

570x705mm

Price: \$1,600

20.



**Gavin Smith**

Arrowtown

Watercolour

460x600mm

Price: \$650

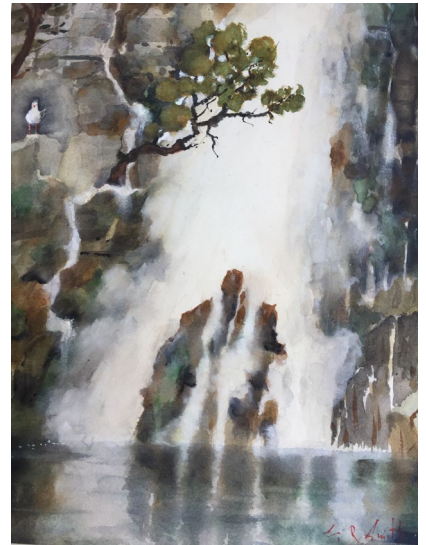


21.



**Gavin Smith**  
Before the Storm  
Watercolour  
540x655mm  
Price: \$1,400

22.



**Gavin Smith**  
Bowen Falls - Milford  
Watercolour  
670x580mm  
Price: \$1,850

23.



**Gavin Smith**  
Old Friends  
Watercolour  
480x530mm  
Price: \$720

24.



**Gavin Smith**  
Road to Maungatautari  
Watercolour  
580x560mm  
Price: \$850

25.



**Gavin Smith**

Marseillan Harbour

Watercolour

560x480mm

Price: \$1,630

26.



**Gavin Smith**

Grounded

Watercolour

570x720mm

Price: \$1,280

27.



**Kirsten McIntosh**

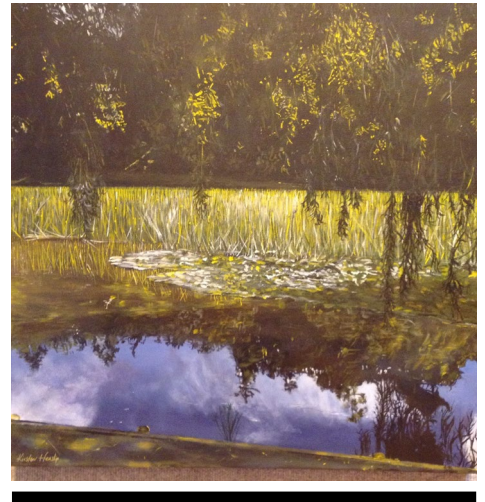
Towards Te Aroha

Oil

510x510mm

Price: \$990

28.



**Kirsten McIntosh**

Summer Reflections at Lake Te Koutu

Acrylic

610x610mm

Price: \$890

29.



**Kirsten McIntosh**

Bird's Eye View

Acrylic

765x765mm

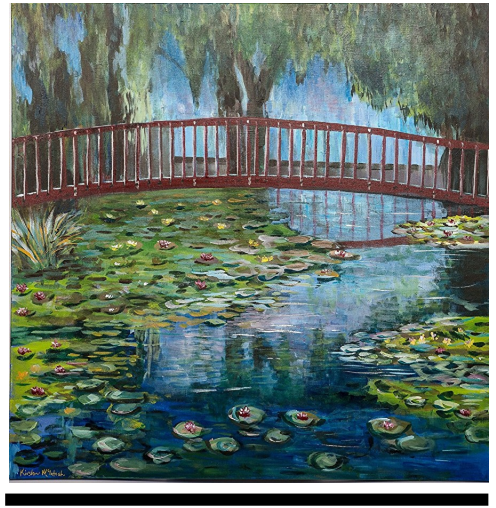
Price: \$1,280

30.



**Kirsten McIntosh**  
Sunset on Raglan Hills  
Oil  
510x510mm  
Price: \$790

31.



**Kirsten McIntosh**  
Waterlilies at Lake Te Koutu  
Acrylic  
765x765mm  
Price: \$1,280

32.



---

**Kirsten McIntosh**  
Mai Mai at Rotoehu  
Oil  
480x585mm oval  
Price: \$750

33.



---

**Kirsten McIntosh**  
Pokaiwhenua Canyon  
Oil  
405mm d.  
Price: \$490

34.



---

**Kirsten McIntosh**  
Raglan Harbour  
Oil  
405mm d.  
Price: \$490

35.



**Kirsten McIntosh**

Lunch at Huka

Oil

765x765mm

Price: \$1,280

36.



**Kirsten McIntosh**

Wairere Falls

Oil

765x765mm

Price: \$1,280

*(Work in progress  
completed for the  
Exhibition)*

## June, Lady Hillary

To mark the conclusion of the Sir Edmund Hillary Centenary year 1919-2020, the *Welcome Swallow Gallery* has commissioned a portrait of June, Lady Hillary painted by gallery artist, **Rebecca Dowman-Ngapo**.

During the current exhibition when the country moves to Alert Level One, the Gallery, in the presence of Lady June, will hold a dedicated event to unveil the portrait. After being on display at the *Welcome Swallow Gallery* it will then be gifted to the Auckland Museum, entering the national archive through the Hillary collection.



# The Exhibition Artists



Gavin R. Smith

After a working life farming sheep, I rekindled my interest in watercolour painting on site, where my style evolved eschewing the need for intense detail.

Following time spent in the UK and Europe I returned to the Waikato, setting up a small home-based gallery in Karapiro.

During this time, several return trips were made back to the UK and Europe that resulted in France and Italy featuring prominently in my watercolour compositions.

I have had several successful solo exhibitions and have won many awards over the past 20 years.

My subject range is varied, but it is the street scenes and boats that hold special interest for me.



Sandra Barlow

Art is not just about creating beautiful pictures; it is often a visual expression of feelings and experiences. As writers use words to weave a story, artists use lines and colour to tell theirs. These creative endeavours are the manifestation, in visible form, of invisible experiences. These pieces have thoughts, meaning and feelings immersed in them. They have their own narrative.

"I Want Your Love" is a series of pictures in graphite that seemingly present vulnerability in a visual form. However, the embracing figures may also represent being surrounded with enough love and security to risk being vulnerable and achieve what would otherwise have been 'all in the mind...'. .





## Kirsten McIntosh

I find no lack of inspiration here in New Zealand. A walk with my family or a short drive yields special scenes to be photographed and brought back to my home studio.

I see opportunities for painting all around me. The roadside grasses, the clouds, the late afternoon sun and I enjoy the challenge of capturing the reflections of rocks and clouds in the water. Every painting I do, I look for a challenge. This helps me to develop my techniques.

I work with a limited colour palette; aiming to tie my works together and establish a consistent style whilst also representing the rich colours of our New Zealand landscapes.



## Helen Cairney

I am a Wellington-based artist and have been drawing and painting for over 40 years. I have studied art in Auckland and Wellington and am a member of the Academy of Fine Arts.

I paint in a variety of styles and use oil and water-based paints. Over the last couple of years I have been building on my collection of 'Aotearoa Icons'. These are an illustrative look at the environment and include images of special places in the city as well as our distinct bird and animal life.

Throughout my art, I explore the incorporation of both realistic and abstract forms along with differing levels of view.





## Yasmin Davis

I was born in Germany and grew up in a small village surrounded by nature. Being creative was always part of my life.

When I came to life in Hamilton I joined the Pottery society and got thoroughly hooked on clay.

I have always made creative things with my hands and I think this wide variety has helped me greatly in my work with clay.

I get inspirations and ideas anywhere. From nature. To seeing a texture or a particular colour, a line or an emotion. These often trigger an avalanche of thoughts and ideas, and I will need several lifetimes to do them all.



## Rebecca Dowman-Ngapo

In this exhibition, Rebecca is a special guest artist showing a single composition that signals her artistry in portraiture form.

As a finalist in the Adam Portraiture competition run by the *National Portrait Gallery* and the commissioned artist for the June, Lady Hillary portrait, to be shown in the *Welcome Swallow Gallery* before being moved permanently to the *Auckland Museum* as part of the Hillary Collection, Rebecca's work is represented here in the composition, **Goddess and the Stars**.

Increasingly sought after for commissions and exhibition pieces, Rebecca style allows watercolour's natural uncertainty to establish a romantic realism to her work.

# GALLERY EXHIBITION LIST

1. Various Artists, ***Celebration with Celebration- Redux***, 1<sup>st</sup> May – 1<sup>st</sup> August 2019
2. Various Artists, ***Threads of Life***, 9<sup>th</sup> August – 20<sup>nd</sup> September 2019
3. Various Artists, ***Raglan Art with Risk***, 27<sup>th</sup> September – 27<sup>th</sup> October 2019
4. Various Artists, ***Christmas in the Gallery***, 1<sup>st</sup> November – 10<sup>th</sup> January 2020
5. Various Artists, ***The Waikato Watercolourists***, 14<sup>th</sup> February – 31<sup>st</sup> March 2020
6. Various Artists, ***A New Zealand Story***, 3<sup>rd</sup> April – 31<sup>st</sup> May 2020
7. Various Artists ***It's all in the Mind***, 10<sup>th</sup> July – 30<sup>th</sup> September 2020
8. *Various Artists*, ***A Welcome Swallow Exhibition***, 18<sup>th</sup> September – 5<sup>th</sup> January 2021



e-mail [welcomeswallow.nz@gmail.com](mailto:welcomeswallow.nz@gmail.com),  
Tel: 07-858-3964; 378 Grey St Hamilton East

PLEASE VISIT



home the gallery gifts blog our story who we are contact



WEBSITE: [www.wsgalleryandgifts.com](http://www.wsgalleryandgifts.com)



home the gallery gifts blog our story who we are contact



FACEBOOK: [www.facebook.com/thewelcomeswallow/](http://www.facebook.com/thewelcomeswallow/)



home the gallery gifts blog our story who we are contact



INSTAGRAM: [www.instagram.com/wsgalleryandgifts/](http://www.instagram.com/wsgalleryandgifts/)