



A  
Welcome Swallow Gallery  
Exhibition **F5**



Catalogue

12.11.20 – 5.1.21

# ~ F5 ~

It is encouraging to be able to attract art buyers to the point that the gallery has had to refresh a successful exhibition!

During the week of the 9<sup>th</sup> November the Gallery undertook a root and branch upgrade of the *Welcome Swallow Exhibition* that had achieved a 60% selling of the entire exhibition.

In order to provide new opportunities for purchase, all sold pieces have been replaced with new compositions by the exhibition artists. Although there is still plenty of interest in the paintings that remain, they now have new neighbours!

See the online Catalogue on the website for more details.



1.



---

**Helen Cairney**

Puriri Moth IV

Acrylic and pencil on paper

280x270mm

Price: \$475

2.



---

**Helen Cairney**

Puriri Moth V

Acrylic and pencil on paper

280x270mm

Price: \$475

3.



---

**Helen Cairney**

Light of the Tui

Acrylic on paper

280x270mm

Price: \$255

4.



---

**Helen Cairney**

A tranquil World

Acrylic and pencil on paper

280x270mm

Price: \$290



5.



**Sandra Barlow**

Shelter

Watercolour

490x410mm

Price: \$450

7.



**Sandra Barlow**

Purity

Watercolour

230x310mm

Price: \$400

6.



**Sandra Barlow**

TOUCH II

Watercolour

350x250mm

Price: \$450

8.



**Sandra Barlow**

Harakeke Whanau

Watercolour

470x300mm

Price: \$450

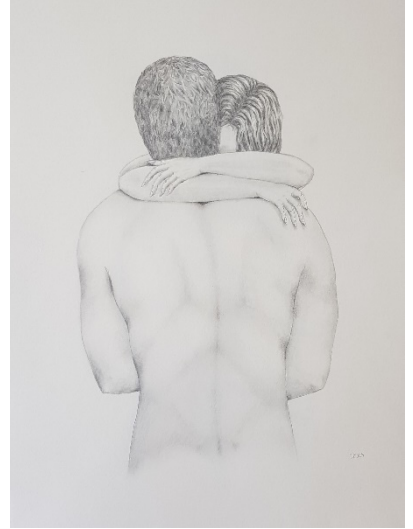


9.



**Sandra Barlow**  
I Want Your Love I  
Graphite  
420x300mm  
Price: \$275

10.



**Sandra Barlow**  
I Want Your Love II  
Graphite  
420x300mm  
Price: \$275

13.



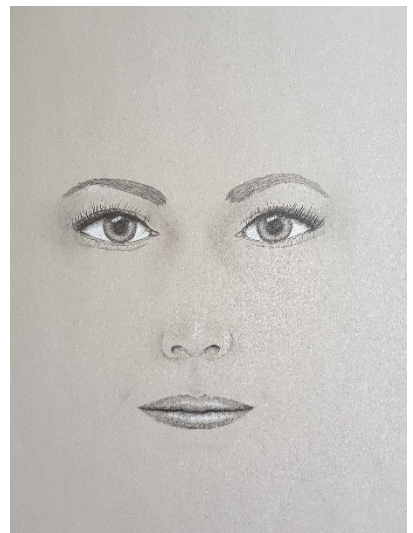
**Sandra Barlow**  
Heart  
Graphite  
42x30mm  
Price: \$120

11.



**Sandra Barlow**  
I Want Your Love III  
Graphite  
420x300mm  
Price: \$275

12.



**Sandra Barlow**  
I Want Your Love IV  
Graphite  
420x300mm  
Price: \$275

15.



---

**Gavin Smith**

Old School House, Mystery Creek

Watercolour

550x670mm

Price: \$1700

16.



## Yasmin Davis

Koru

Multiple ceramics in situ...

Prices available on separate  
price list



*Sample tiles*



17.



**Gavin Smith**

At Rest

Watercolour

470x490mm

Price: \$490

18.



**Gavin Smith**

Market Day, Firenze

Watercolour

470x490mm

Price: \$580

19.



**Gavin Smith**

Evening on the Harbour

Watercolour

570x705mm

Price: \$1,600

20.



**Gavin Smith**

Stump Bay

Watercolour

550x670mm

Price: \$1,200

21.



**Gavin Smith**

Before the Storm

Watercolour

540x655mm

Price: \$1,400

22.



**Gavin Smith**

Port des Onglous, Canal du Midi

Watercolour

450x750mm

Price: \$1,700

23.



**Gavin Smith**

Old Friends

Watercolour

480x530mm

Price: \$720

24.



**Gavin Smith**

Road to Maungatautari

Watercolour

580x560mm

Price: \$850



25.



**Gavin Smith**

Marseillan Harbour

Watercolour

560x480mm

Price: \$1,630

26.



**Kirsten McIntosh**

Fencourt Hills

Watercolour

300x610mm

Price: \$490



27.



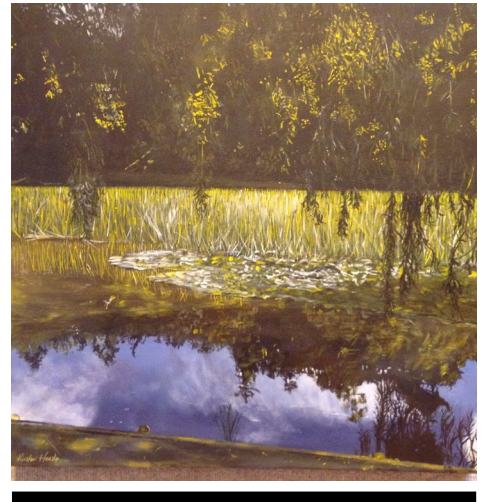
**Kirsten McIntosh**

Towards Te Aroha  
Oil

510x510mm

Price: \$990

28.



**Kirsten McIntosh**

Summer Reflections at Lake Te Koutu  
Acrylic

610x610mm

Price: \$890

29.



**Kirsten McIntosh**

Bird's Eye View  
Acrylic

765x765mm

Price: \$1,280

30.



**Kirsten McIntosh**

Roadside Grasses

Oil

510x510mm

Price: \$640

31.



**Kirsten McIntosh**

Waterlilies at Lake Te Koutu

Acrylic

765x765mm

Price: \$1,280

32.



**Kirsten McIntosh**

Mai Mai at Rotoehu

Oil

480x585mm oval

Price: \$750



33.



34.

---

**Kirsten McIntosh**

Lake Edge

Oil

700mm d.

Price: \$990



---

**Kirsten McIntosh**

Raglan Harbour

Oil

405mm d.

Price: \$490



35.



**Kirsten McIntosh**

Lunch at Huka

Oil

765x765mm

Price: \$1,280

36.



**Kirsten McIntosh**

*(Work in progress  
completed for the  
Exhibition)*

Wairere Falls

Oil

765x765mm

Price: \$1,280

# June, Lady Hillary

To mark the conclusion of the Sir Edmund Hillary Centenary year 1919-2020, the *Welcome Swallow Gallery* commissioned a portrait of June, Lady Hillary painted by gallery artist, **Rebecca Dowman-Ngapo**.

On 15<sup>th</sup> October this fabulous portrait was unveiled at the Gallery. The occasion, MC's by Mark Sainsbury, in the presence of **June, Lady Hillary**, was attended by over 120 invited guests. After being on display at the *Welcome Swallow Gallery* the portrait will then be gifted to the *Auckland Museum*, entering the national archive through the Hillary collection. For more details of the event visit the Gallery website @ [www.wsgalleryandgifts.com](http://www.wsgalleryandgifts.com)



# The Exhibition Artists



Gavin R. Smith

After a working life farming sheep, I rekindled my interest in watercolour painting on site, where my style evolved eschewing the need for intense detail.

Following time spent in the UK and Europe I returned to the Waikato, setting up a small home-based gallery in Karapiro.

During this time, several return trips were made back to the UK and Europe that resulted in France and Italy featuring prominently in my watercolour compositions.

I have had several successful solo exhibitions and have won many awards over the past 20 years.

My subject range is varied, but it is the street scenes and boats that hold special interest for me.



Sandra Barlow

Art is not just about creating beautiful pictures; it is often a visual expression of feelings and experiences. As writers use words to weave a story, artists use lines and colour to tell theirs. These creative endeavours are the manifestation, in visible form, of invisible experiences. These pieces have thoughts, meaning and feelings immersed in them. They have their own narrative.

"I Want Your Love" is a series of pictures in graphite that seemingly present vulnerability in a visual form. However, the embracing figures may also represent being surrounded with enough love and security to risk being vulnerable and achieve what would otherwise have been 'all in the mind...'.





## Kirsten McIntosh

I find no lack of inspiration here in New Zealand. A walk with my family or a short drive yields special scenes to be photographed and brought back to my home studio.

I see opportunities for painting all around me. The roadside grasses, the clouds, the late afternoon sun and I enjoy the challenge of capturing the reflections of rocks and clouds in the water. Every painting I do, I look for a challenge. This helps me to develop my techniques.

I work with a limited colour palette; aiming to tie my works together and establish a consistent style whilst also representing the rich colours of our New Zealand landscapes.



## Helen Cairney

I am a Wellington-based artist and have been drawing and painting for over 40 years. I have studied art in Auckland and Wellington and am a member of the Academy of Fine Arts.

I paint in a variety of styles and use oil and water-based paints. Over the last couple of years I have been building on my collection of 'Aotearoa Icons'. These are an illustrative look at the environment and include images of special places in the city as well as our distinct bird and animal life.

Throughout my art, I explore the incorporation of both realistic and abstract forms along with differing levels of view.





## Yasmin Davis

I was born in Germany and grew up in a small village surrounded by nature. Being creative was always part of my life.

When I came to life in Hamilton I joined the Pottery society and got thoroughly hooked on clay.

I have always made creative things with my hands and I think this wide variety has helped me greatly in my work with clay.

I get inspirations and ideas anywhere. From nature. To seeing a texture or a particular colour, a line or an emotion. These often trigger an avalanche of thoughts and ideas, and I will need several lifetimes to do them all.



## Rebecca Dowman-Ngapo

In this exhibition, Rebecca is a special guest artist showing a single composition that signals her artistry in portraiture form.

As a finalist in the Adam Portraiture competition run by the *National Portrait Gallery* and the commissioned artist for the June, Lady Hillary portrait, to be shown in the *Welcome Swallow Gallery* before being moved permanently to the *Auckland Museum* as part of the Hillary Collection, Rebecca's work is represented here in the composition, **Goddess and the Stars**.

Increasingly sought after for commissions and exhibition pieces, Rebecca style allows watercolour's natural uncertainty to establish a romantic realism to her work.

# GALLERY EXHIBITION LIST

1. Various Artists, ***Celebration with Celebration- Redux***, 1<sup>st</sup> May – 1<sup>st</sup> August 2019
2. Various Artists, ***Threads of Life***, 9<sup>th</sup> August – 20<sup>nd</sup> September 2019
3. Various Artists, ***Raglan Art with Risk***, 27<sup>th</sup> September – 27<sup>th</sup> October 2019
4. Various Artists, ***Christmas in the Gallery***, 1<sup>st</sup> November – 10<sup>th</sup> January 2020
5. Various Artists, ***The Waikato Watercolourists***, 14<sup>th</sup> February – 31<sup>st</sup> March 2020
6. Various Artists, ***A New Zealand Story***, 3<sup>rd</sup> April – 31<sup>st</sup> May 2020
7. Various Artists ***It's all in the Mind***, 10<sup>th</sup> July – 30<sup>th</sup> September 2020
8. *Various Artists*, ***A Welcome Swallow Exhibition***, 18<sup>th</sup> September – 11<sup>th</sup> Nov 5<sup>th</sup>
9. *Various Artists* ***F5*** 12 November – 5<sup>th</sup> January 2021



e-mail [welcomeswallow.nz@gmail.com](mailto:welcomeswallow.nz@gmail.com);  
Tel: 07-858-3964; 378 Grey St Hamilton East

PLEASE VISIT

YOUTUBE: [www.youtube.com/channel/UCrn5EKzvZ7uSmHJP27bciNQ](http://www.youtube.com/channel/UCrn5EKzvZ7uSmHJP27bciNQ)



WEBSITE: [www.wsgalleryandgifts.com](http://www.wsgalleryandgifts.com)



FACEBOOK: [www.facebook.com/thewelcomeswallow/](http://www.facebook.com/thewelcomeswallow/)



INSTAGRAM: [www.instagram.com/wsgalleryandgifts/](http://www.instagram.com/wsgalleryandgifts/)